

2023-24 Instructions for Authors

Traffic Injury Prevention

Traffic Injury Prevention is an archival journal covering traffic safety, crash prevention and injury control. Papers include research on crash avoidance and causation, road safety, autonomous vehicle safety, alcohol and drug impairment, behavior and psychology of traffic participants, human factors, injury mechanisms, impact biomechanics, injury prevention, treatment and epidemiology. It is indexed by MEDLINE, Science Citation Index Expanded, Social Sciences Citation Index and other databases. Published articles have been subjected to anonymous and independent peer review. They can include all phases of experimental, computational, statistical, emergency, clinical and epidemiological research.

Submission of Manuscripts: Traffic Injury Prevention receives all manuscript submissions electronically via the Taylor & Francis website located at: <https://accounts.taylorfrancis.com/identity/#/login>. The website allows submission of original manuscripts. Once submitted, all correspondence is via Scholar One website: <https://mc.manuscriptcentral.com/gcpi>, which facilitates the review process and communication between authors, editors and reviewers via a web-based platform. For ScholarOne Manuscripts technical support, contact the Peer Review Systems Helpdesk at prshelp@tandf.co.uk. If you have any other questions, contact the Editor at: dviano@comcast.net.

Manuscripts are accepted for review with the understanding that submission for publication has been approved by all the authors and by the institution where the work was carried out, and that any person cited as a source of personal communications has approved the submission. Written authorization may be required at the Editor's discretion. The authors also agree to the Data Sharing Policy of the Journal and Publisher. Articles and any other materials published in **Traffic Injury Prevention** represent the opinions of the authors and should not be construed to reflect the opinions of the Editor, Associate Editors or Publisher.

Data Sharing Policy: Taylor & Francis supports basic data sharing. The policy encourages authors to share and make the data underlying their published article publicly available where this does not violate protection of human subjects, subject privacy concerns or other agreements or restrictions by the source of the data. Authors are encouraged to cite data referenced in their paper whether this has been created by the author or someone else. Cited data can be included in the reference list or included in the supplemental material stored with the paper online. The policy encourages authors to agree to share their data upon reasonable request, to make data publicly available and/or to make data fully open with re-use rights. Authors are encouraged to include a data availability statement.

Preparation of Manuscripts: As a general guideline, papers should be limited to 6,000 words and contain no more than 12 concise tables and figures with each figure within a figure counted toward the total. Guidelines for figures are included at the end of these instructions. Tables should be limited to 8 columns and 10 rows of simple entries and short words in the published version, larger Tables should be placed in the Appendix. Limit the number of references to 50, which are included in the reference list. Move less important ones to a bibliography in the Appendix and do not cite in the main text. Add a sentence to the Introduction that additional references can be found in the bibliography in the Appendix. Supplementary text, figures and tables are encouraged to be placed in an Appendix, which is not typeset but is available electronically online with the paper. The Appendix should include large data tables, data sharing, bibliography and additional text, Figures and Tables. The material in the Appendix should be called Table A1, A2, etc., Figure A1, A2, etc. The Appendix should be a stand-alone document uploaded online with the paper.

Manuscripts should contain the following sections in this order: title, author name(s) and affiliation(s), complete mailing and email address(es), structured Abstract with headings Objectives:, Methods:, Results:, Conclusions:, key words for indexing, word count and number of figures and tables, introduction, methods, results, discussion, acknowledgments including funding and disclosure statements, data availability statement and references. Section numbers should not be used. Notations should be defined as they are introduced. The text should be one column width, one and one-half spaced with 1-inch margins using Times New Roman 10-point font for review. The manuscript should consist of text with the tables and figures at the end. The Abstract should be included with the text after the title page. Number the pages and do not use footnotes.

Authors are responsible for obtaining permission to reproduce copyrighted material from other sources and are required to include a signed copyright form with their submission. As an author, you are required to secure permission if you want to reproduce any figure, table, or extract text from another source. This applies to direct reproduction as well as "derivative reproduction" (where you have created a new figure or table which derives substantially from a copyrighted source). All accepted manuscripts, artwork, and photographs become the Publisher's property.

The Journal requires authors to list the specific version of the Abbreviated Injury Scale (AIS) used and their level of experience in classifying AIS when done in the research. The Journal also requires that Randomized Controlled Trials (RCT) follow the CONSORT guidelines, which improve the RCT reporting and enable readers to understand how a trial was conducted and to assess validity of the results. The guidelines can be found at: <http://www.consort-statement.org>.

Language: English only.

Structured Abstract: <350 words using the four headings: objective, methods, results, conclusions.

Key Words: Include up to six key words for indexing and database word searches.

Text Headings: Set first-level headings in the text to the left, typed in all capitals and bold face; begin text on the following line. Second level headings should be typed in bold lowercase letters, but with all main words capitalized; start text on the next line. For third-level headings, use bold type and capitalize only the first word; begin text on the same line after three spaces.

FIRST-LEVEL TEXT HEADINGS

Second-Level Text Headings

Third-level headings: Text

References: The Journal follows the reference style of the Council of Science Editors (CSE) for the reference list. Details can be found at: <https://www.councilscienceeditors.org/scientific-style-and-format>. Authors are responsible for the accuracy and completeness of their references and for correct text citation. Compile references at the end of the text after the acknowledgments if any. List all authors and organize references in alphabetical order. In text, tables, and legends, identify references with author name and year, such as Jones et al. (2008) or (Jones et al. 2008). The Journal discourages the use of website references. When preparing references, use the citation found on PubMed with the abbreviated name of the journals, such as:

McCartt AT, Hellinga LA, Strouse LM, Farmer CM. 2020. Long-term effects of handheld cell phone laws on driver handheld cell phone use. *Traffic Inj Prev.* Apr;11(2):133-41. doi: 10.1080/15389580903515427. PMID: 20373232.

Digges K, Dalmotas D. 2007. Benefits of a low severity frontal crash test. *Annu Proc Assoc Adv Automot Med.* 2007;51:299-317. PMID: 18184499.

Equations: Mathematical equations should be numbered using Arabic numerals enclosed in parentheses on the right-hand margin. They should be cited in the text as Eq. (10), or Eqs. (12-16).

Units: Manuscripts submitted for publication must use SI units. English units may be included in parentheses.

Tables and Figures: Tables and figures should be included at the end of the text using Times New Roman font. A short descriptive title should appear above each table with a clear legend and any footnotes suitably identified below. Units must be included. Figures should be labeled, considering necessary size reductions as figures are preferred in one-column width (3" wide) for the paper layout. The instructions include figure guidelines and preferred style in the following. Captions should be typed under each figure. The figures should not use grid lines or boundary boxes and exclude headings.

Color art will be reproduced in color in the online publication at no additional cost to the author. Color illustrations will be considered for print publication; however, the author will be required to bear the cost involved in color art reproduction. Please note that color reprints can only be ordered if print reproduction costs are paid. **Print Rates:** \$900 for the first page of color; \$450 per page for the next three pages of color. A quote will be provided for articles with more than four pages of color. The editor may modify the figures for consistency in the Journal, and the publisher has the right to refuse publication of any artwork deemed unacceptable.

Figure Style: The following provides guidelines for the preparation of figures:

1) The goal is to include figures in one column of the paper layout. This means the figure needs to be clear and legible at a width of 3" (7.6 cm). Please print your figures and scale to that width to make sure they are readable and understandable. Wherever possible, compress the lateral width so the figure has the best presentation in one column width.

- 2) The Journal does not print in color unless the authors pay a fee for color. Color figures are included in the online pdf version of the published paper. If your figures are in color, make sure they are legible when printed to black and white.
- 3) Use Times New Roman font. Make sure the labeling on the x- and y-axes are large enough to be read.
- 4) Do not use boundary lines or boxes around the legend of the figure. Do not use grid lines, either horizontal or vertical in the background of the figure.
- 5) Do not include a heading or figure labels at the top. This information should be included in the figure caption.
- 6) Place the legend for the figure at the top, bottom or integrate within the figure. Do not place it to the right.
- 7) Accepted papers will require the figures to be provided in an editable format in PowerPoint for final changes before sending the paper to the Publisher.
- 8) The following pages show examples of figures submitted (left) and the final format used in the published paper (right). Follow the look of the figures on the right in preparing your materials.

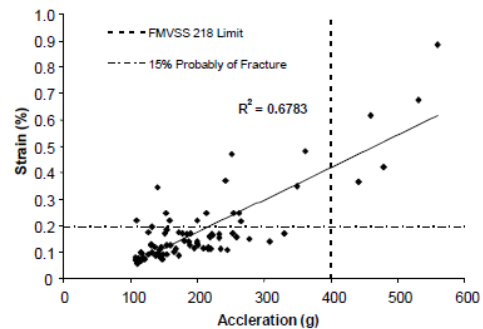
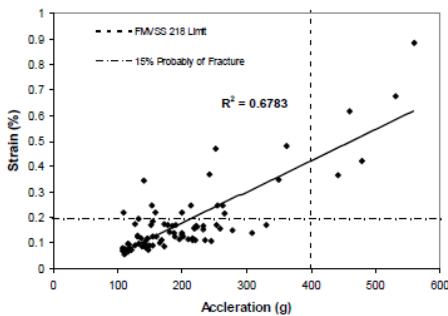
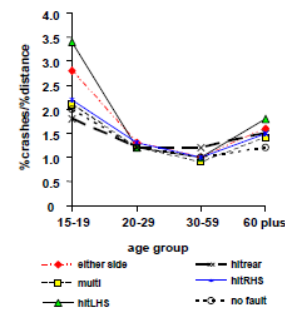
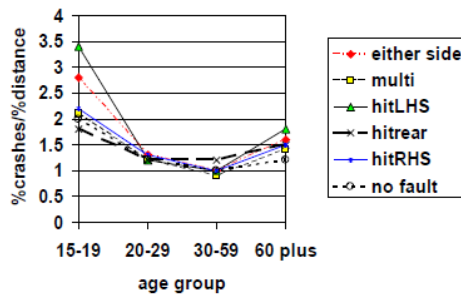
Guidelines for Figures

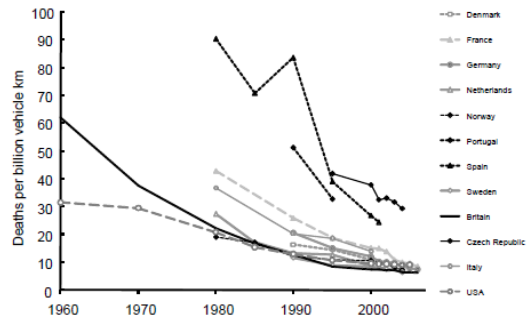
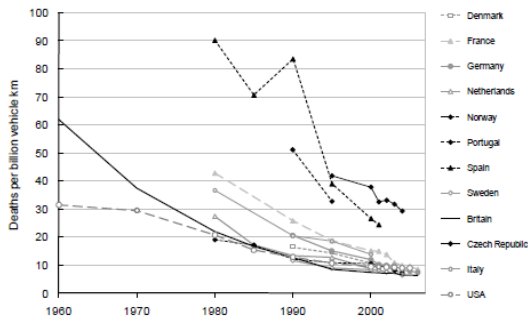
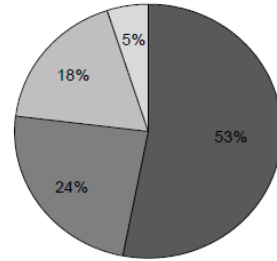
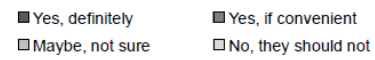
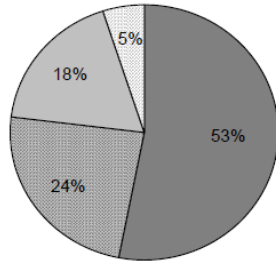
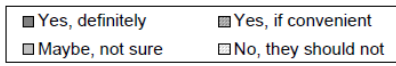
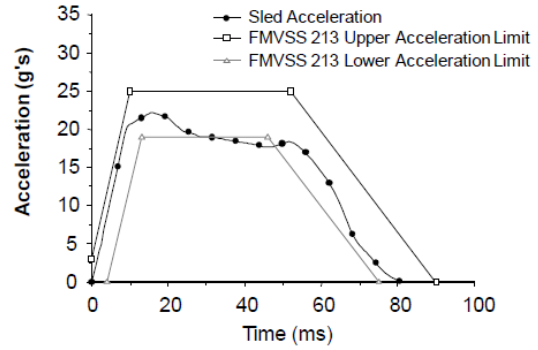
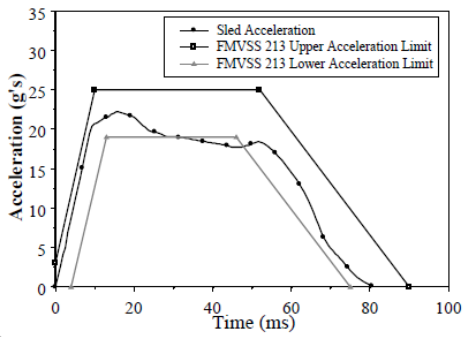
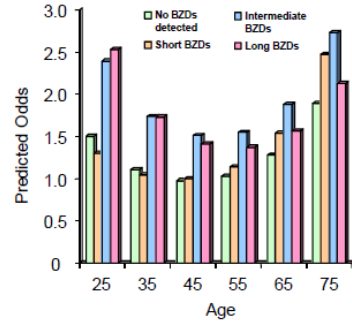
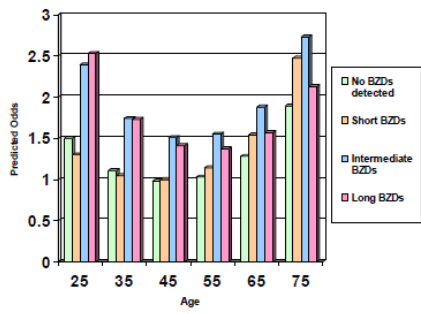
Not Acceptable

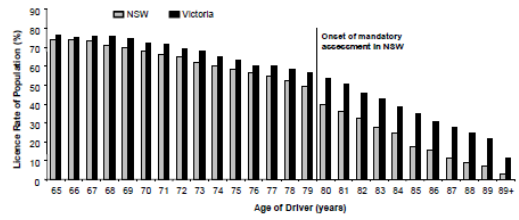
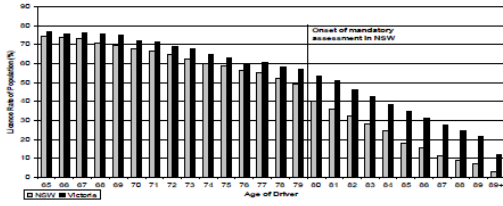
Acceptable

Original Submission

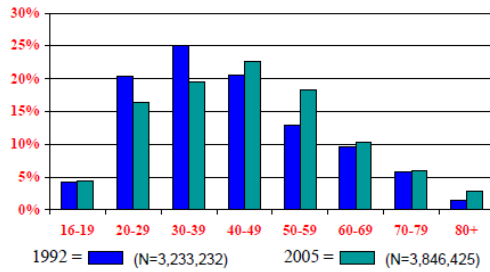
Revised for publication



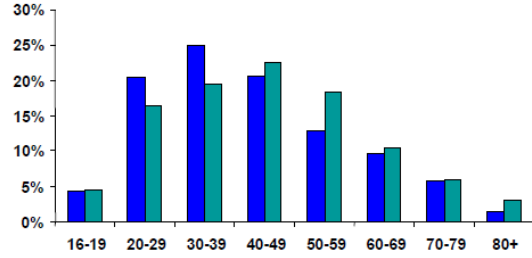




Maryland Licensed Driving Population By age: 1992 compared to 2005



Data courtesy Dr. Joseph B. Mierczak, Jr.
Maryland MVA, Operations Research Division



Data courtesy Dr. Joseph B. Mierczak, Jr.
Maryland MVA, Operations Research Division

